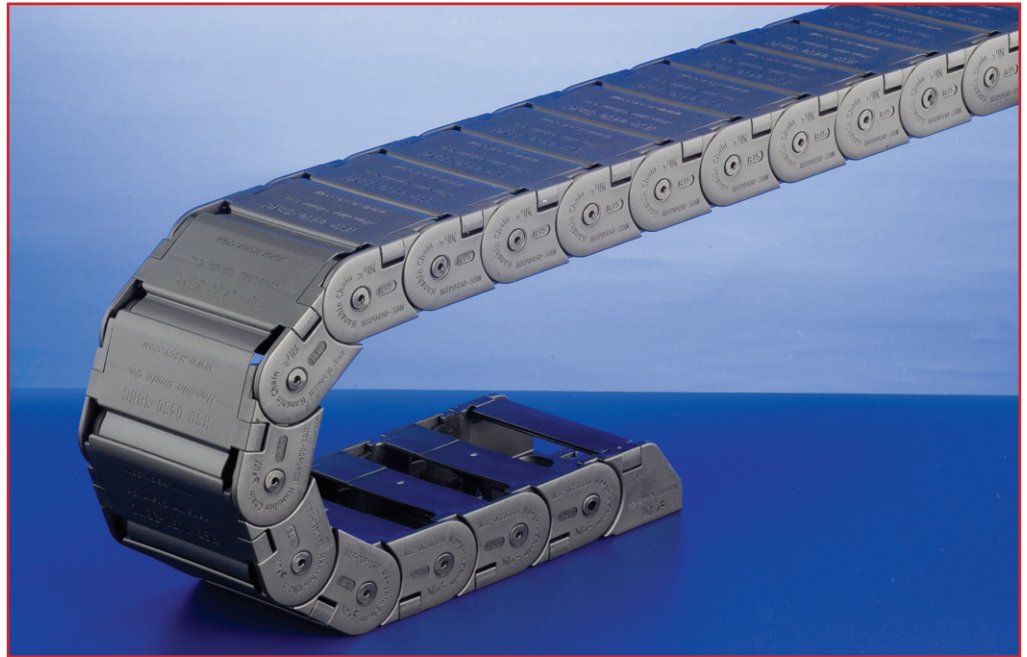


HSPNC type

HSP 0450-1BNC
 HSP 0450-2BNC
 HSP 0450-3BNC
 HSP 0450-4BNC



· 실용신안등록 제 093356호
 · 실용신안등록 제 134988호

● 용도 Application

자동화기계, 반도체, 전자, 목공기계, 식품기계, 취출로봇, 섬유기계, 특장차
 자동차생산설비, 의료기계, 각종 공작기계 및 컴퓨터 관련기계에 적용.

Factory automation, Wood work machine, Food processing, Grabbing-and-extracting robot, Fabric machine, Special purpose vehicle, Automobile industry, Medical Machine, Machining center and Computer related machine

● 특징 Features

- 본체는 개폐형으로 Cable, Hose의 설치가 쉽습니다.
- 경량이어서 움직임이 원활합니다.
- Divider가 좌우로 움직입니다.
- 150여종의 다양한 모델과 특수 규격도 주문가능합니다.
- 자동화기계, 목공기계, 식품기계, 산업용로봇 등 다방면에 적합한 모델입니다.

- HSP type provides cover lead for easy installation of cable and hose.
- Since it is light, movement is prompt.
- Divider is adjustable.
- 150 various models are manufactured. Also special order can be taken place.
- Applicable for factory automation, wood work, food processing, industrial robot and many more.



● 운영환경 Operation

HSPNC Type은 플라스틱 RoboChain으로 케이블 및 호스의 인입을 용이하게 하는 개폐형으로 설계되어 있습니다. HSPNC Type의 RoboChain는 모든 구성품이 고강도 엔지니어링 플라스틱으로 설계 제작되어 소음이 적고, 깨끗하며 작고, 가벼운 장점이 있습니다. 특히 HSP 0450-1BNC이상의 Type은 Divider를 부착하여 사용하실 수 있습니다. HSPNC Type은 전자기계, 산업용 로봇 공작기계 및 다양한 면에 사용되는 이상적인 장치입니다.

Cover in HSPNC Type provides easy access and installation of cable and hose. All parts are made of highly durable engineering plastic. Therefore, it features less noise, good appearance and light weight. In particular, HSP 0450-1BNC and higher types accommodate divider.

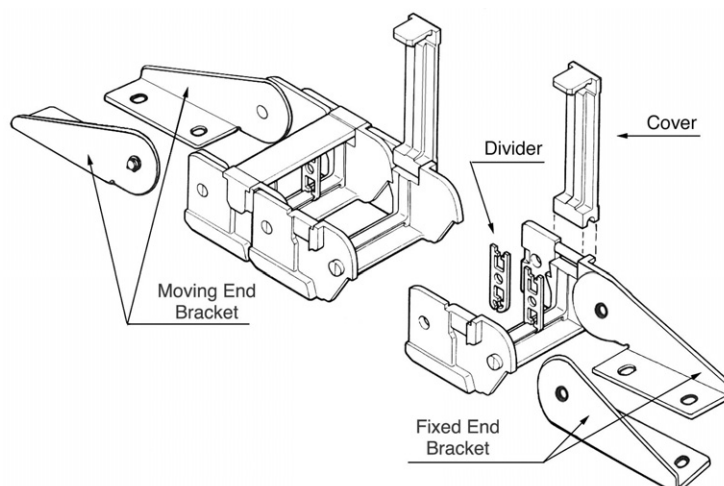
This type is applicable for many area such as electronic and electrical machine, industrial robot, machine center and many more.

● 주요제원 Properties

- 운동속도 : 180m/min이하
- 케이블 호스의 직경 : 22mm 이하
- 사용온도 : -25 ~ 100°C
- 장력 : 190(건조), 120(공기습도) N/mm²
- 인장 팽창 : 4(건조), 6(공기습도) %
- 탄성계수 : 10000(건조), 7000(공기습도) N/mm²
- 미끄럼 마찰 : 0.4(무윤활시)
- 기본색 : Black (칼라 주문가능)
- 재질 : 엔지니어링 플라스틱

- Moving Velocity: below 180m/min
- Diameter of Cable Hose: less than 22mm
- Operating Temperature: -25 ~ 100°C
- Tension: 190 (in dry), 120 (in moisture) N/mm²
- Stretch: 4 (in dry), 6 (in moisture) %
- Elasticity: 10000 (in dry), 7000 (in moisture) N/mm²
- Sliding Friction: 0.4 (non-greased)
- Basic Color: Black
- Material: Engineering Plastic

● 구조와명칭 Structure

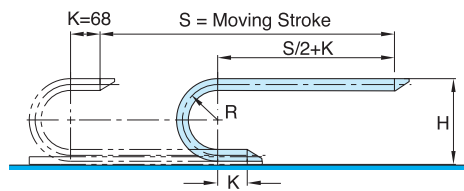
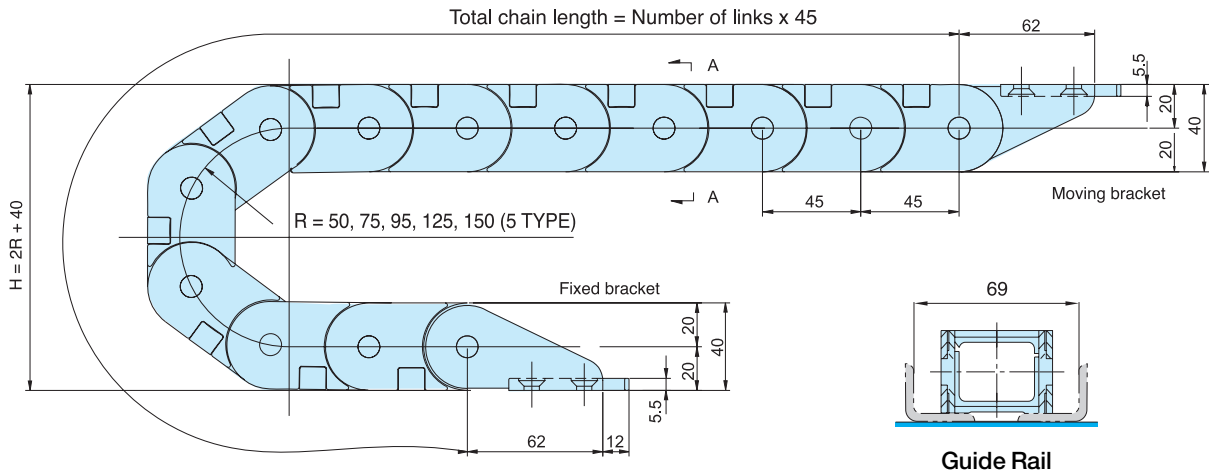


HSP 0450-1BNC

Order Example (주문예)

HSP0450-1BNC 150R 2000L 3SETS
 Type Radius Length Q'ty

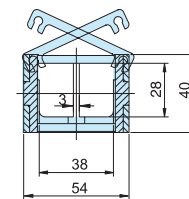
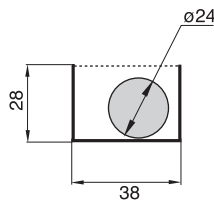
Chain, Guide Rail



• Length $L = \frac{S}{2} + \pi R + 136$

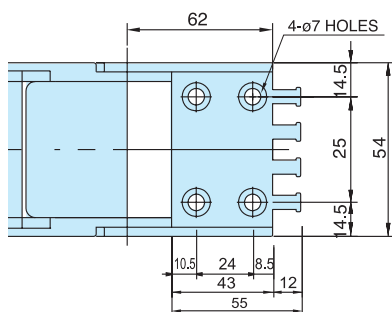
• Radius	R	50	75	95	125	150
• Height	H	140	190	230	290	340

Max. Cable Diameter Cross Section

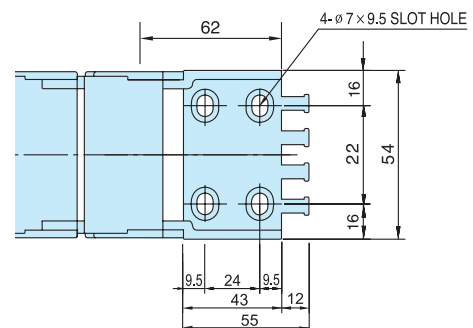


A-A Cross Section

Brackets



Fixed Bracket



Moving Bracket

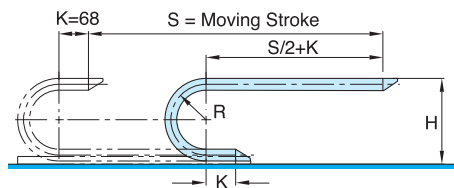
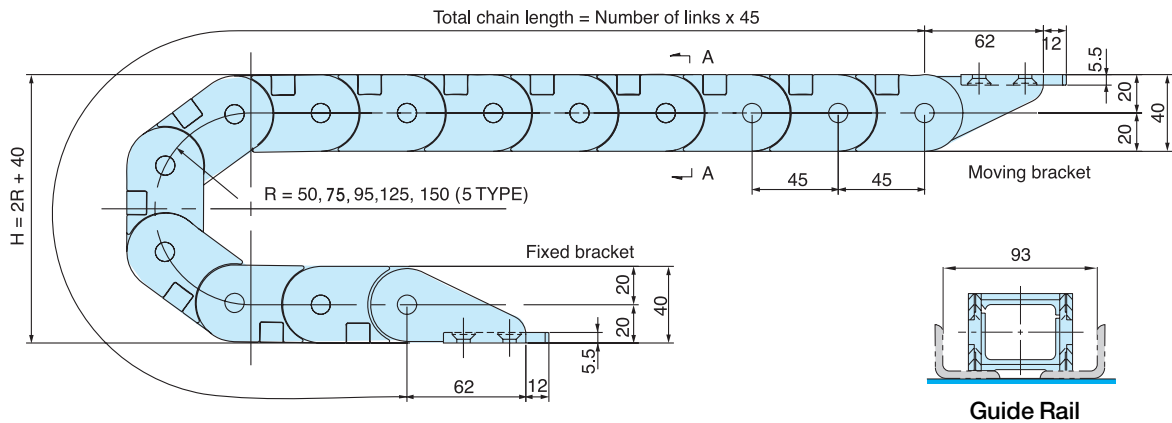


HSP 0450-2BNC

Order Example (주문예)

HSP0450-2BNC 150R 2000L 3SETS
 Type Radius Length Q'ty

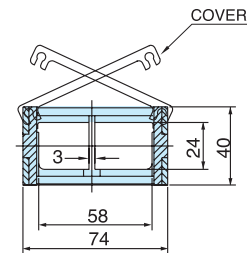
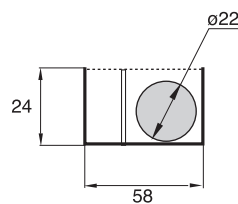
Chain, Guide Rail



• Length $L = \frac{S}{2} + \pi R + 136$

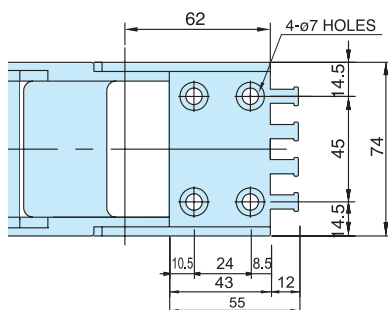
• Radius	R	50	75	95	125	150
• Height	H	140	190	230	290	340

Max. Cable Diameter Cross Section

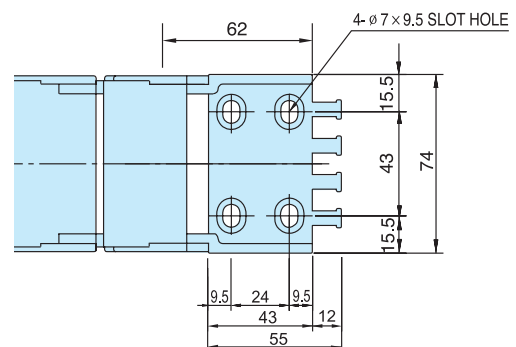


A-A Cross Section

Brackets



Fixed Bracket



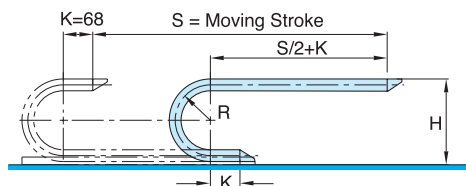
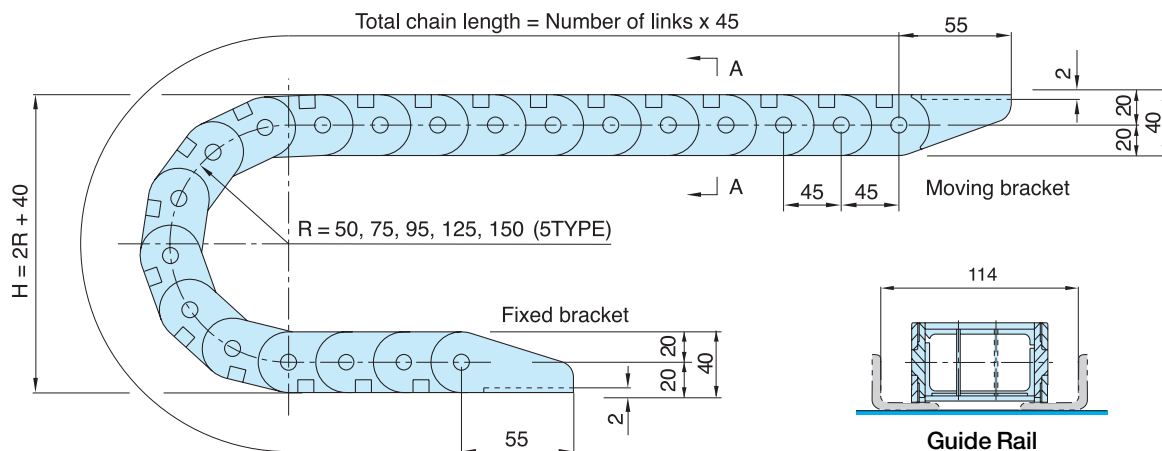
Moving Bracket

HSP 0450-3BNC

Order Example (주문예)

HSP0450-3BNC 50R 2000L 3SETS
 Type Radius Length Q'ty

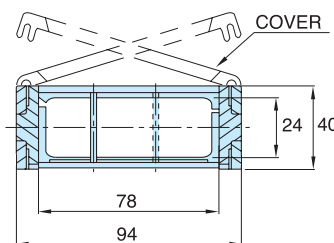
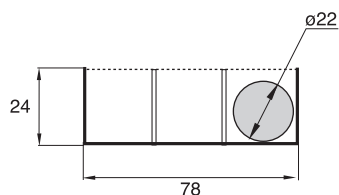
Chain, Guide Rail



• Length $L = \frac{S}{2} + \pi R + 136$

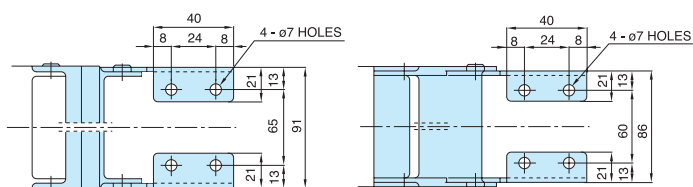
• Radius	R	50	75	95	125	150
• Height	H	140	190	230	290	340

Max. Cable Diameter Cross Section



A-A Cross Section

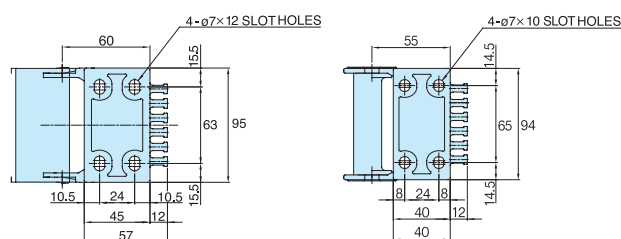
Brackets (STEEL)



Fixed Bracket

Moving Bracket

Brackets (PLASTIC)



Fixed Bracket

Moving Bracket

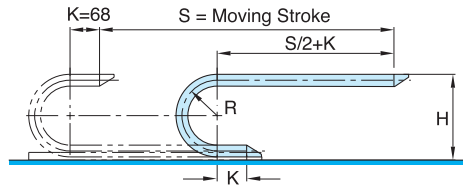
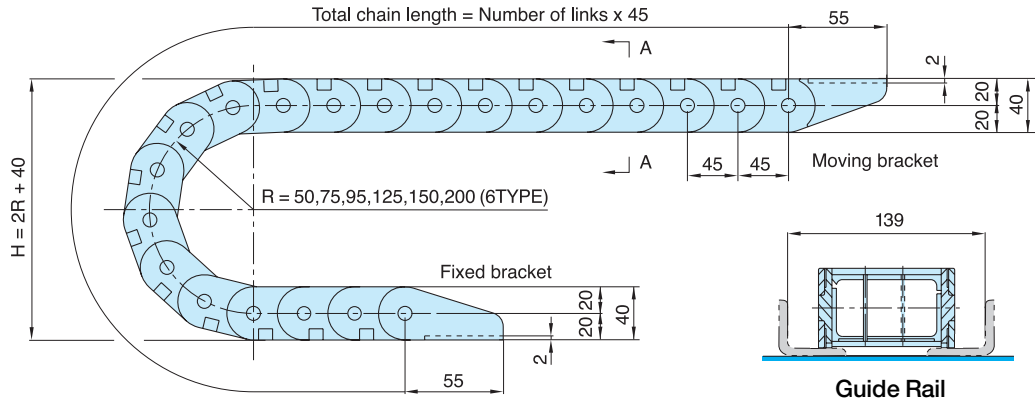


HSP 0450-4BNC

Order Example (주문예)

HSP0450-4BNC 150R 3000L 3SETS
 Type Radius Length Q'ty

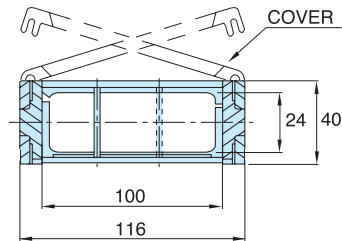
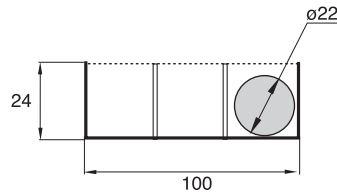
Chain, Guide Rail



• Length $L = \frac{S}{2} + \pi R + 136$

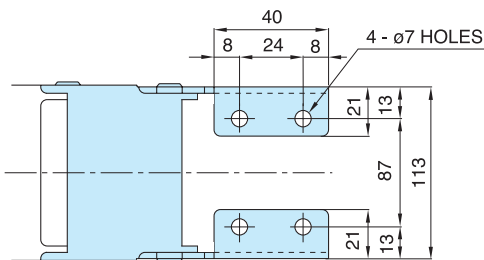
• Radius	R	50	75	95	125	150	200
• Height	H	140	190	226	290	340	440

Max. Cable Diameter Cross Section

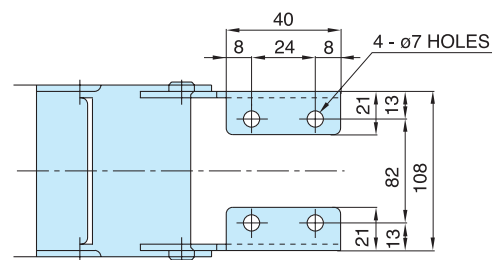


A-A Cross Section

Brackets



Fixed Bracket



Moving Bracket