

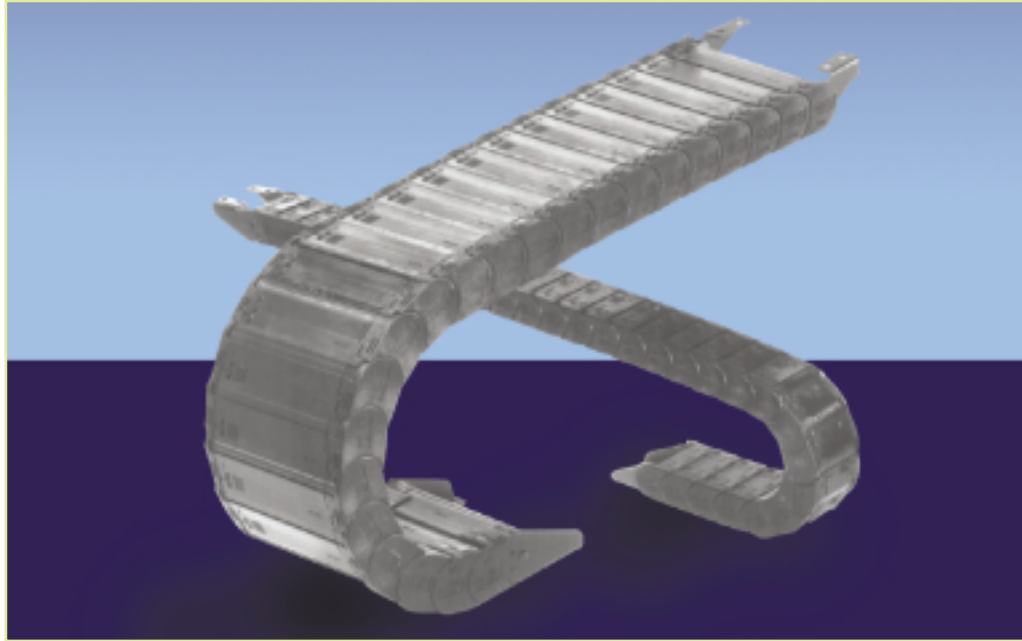
TKC type

TKC 340

TKC 470

TKC 640

TKC 850



● 용도 Application

공작기계, 용접 ROBOT, 자동차산업, 목공기계, 반도체생산설비, 철강설비에 적용

Machining center, Soldering robot, Automobile industry, Wood work machine, Semi-conductor production facility, Still mill industry

● 특징 Features

- 밀폐형으로 이물질로부터 Cable, Hose를 보호할 수 있습니다.
- 본체의 Cover가 개폐되어 Cable, Hose의 설치가 쉽습니다.
- 100여종의 다양한 모델이 있습니다.
- *Insulation design prevents cable and hose from alien materials.*
- *Body cover can be open for easy installation of cable and hose.*
- *100 various models are manufactured. Also special order can be taken place.*



● 운용환경 Operation

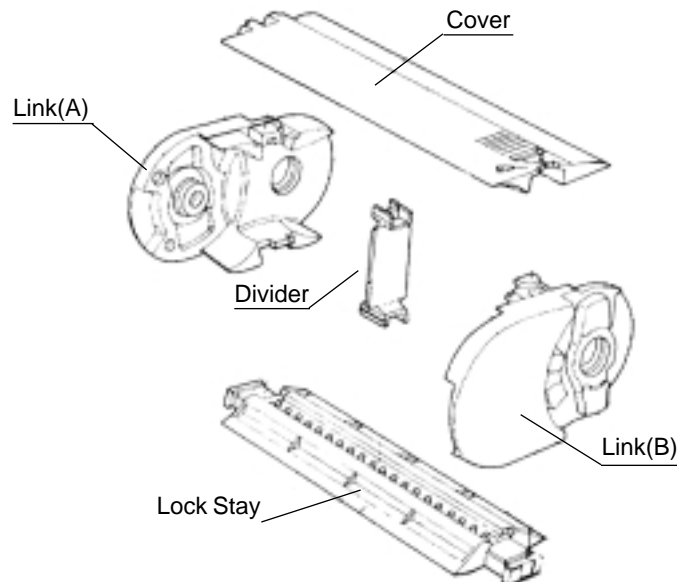
TKC Type의 Robochain는 모든 구성품이 고강도 엔지니어링 플라스틱으로 설계 제작되어 소음이 적고, 깨끗하며 작고, 가벼운 장점이 있습니다. 특히 밀폐형으로 이물질로부터 Cable, Hose 보호에 적합합니다.

*All parts of TKC type cableveypyr are made of very high strength engineering plastic, and it is designed for reducing noise, clean and small, and light weight.
In particular, insulation design can prevent cable and hose from alien materials.*

● 주요제원 Propeties

- 운동속도 : 300m/min이하(Freespan내)
 - 사용온도 : -40 ~ 80°C
 - 기본색 : Black
 - 재질 : 엔지니어링 플라스틱
- Moving Velocity: below 300m/min (within freespan)
 - Operating Temperature: -40 ~ 80°C
 - Basic Color: Black
 - Material: Engineering Plastic

● 구조와 명칭 Structure

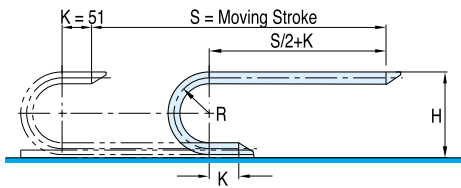
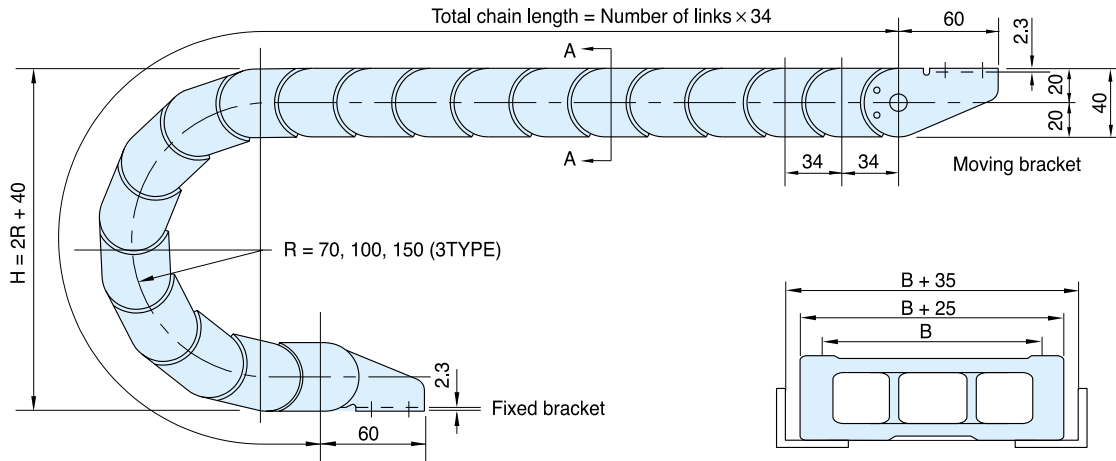


TKC 340

Order Example (주문예)

TKC340	70R	B90	1700L	3SET
Type	Radius	Width	Length	Q'ty

Chain, Guide Rail



• Length $L = \frac{S}{2} + \pi R + 102$

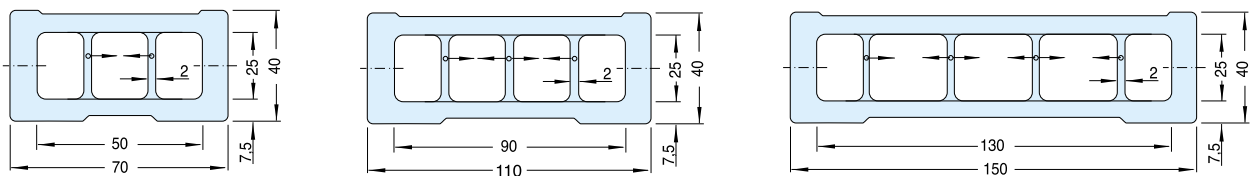
• Radius

R	70	100	150
---	----	-----	-----

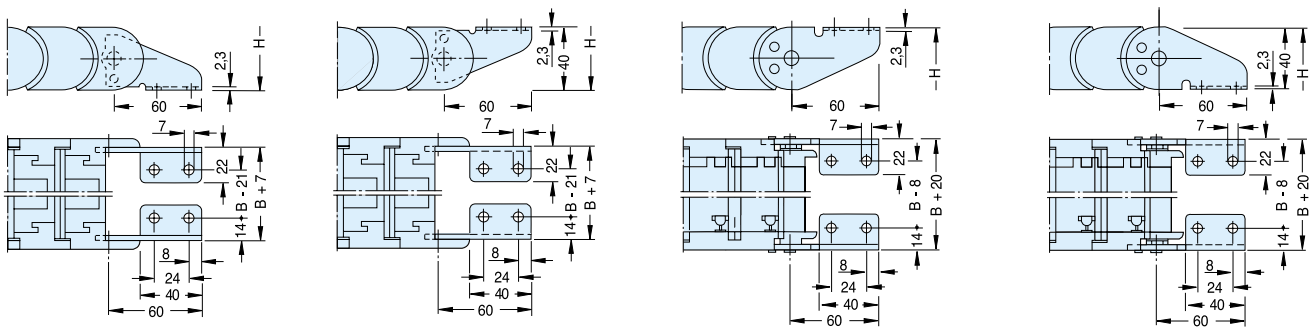
• Height

H	180	240	340
---	-----	-----	-----

Cross Section A-A



Brackets



Fixed Bracket

Moving Bracket

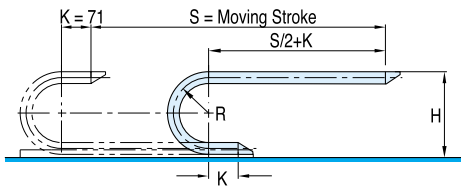
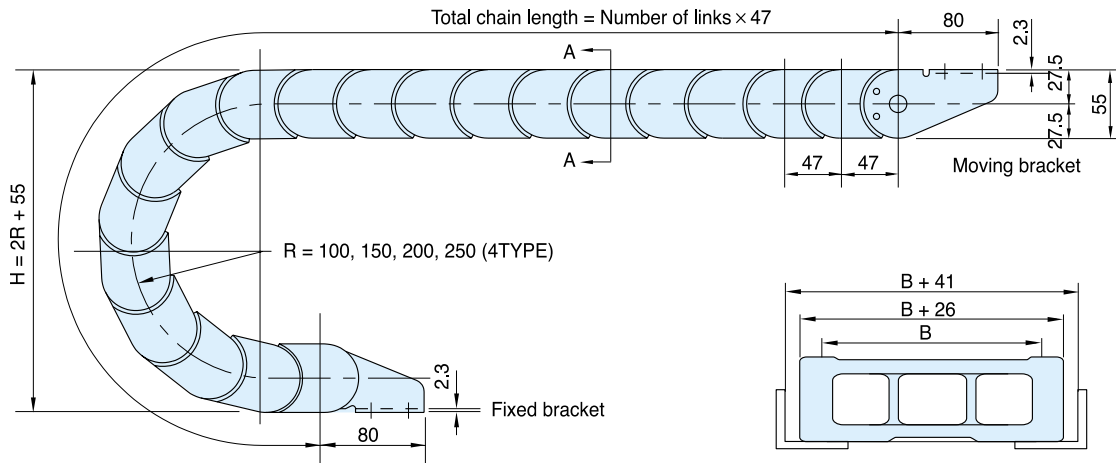


TKC 470

Order Example (주문예)

TKC470	150R	B160	2021L	6SET
Type	Radius	Width	Length	Q'ty

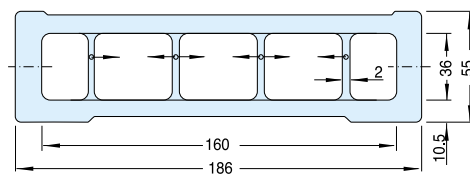
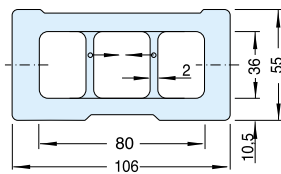
Chain, Guide Rail



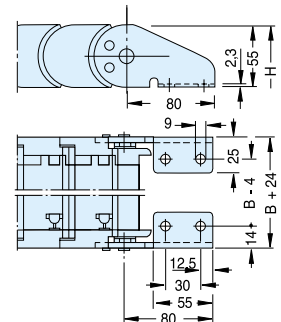
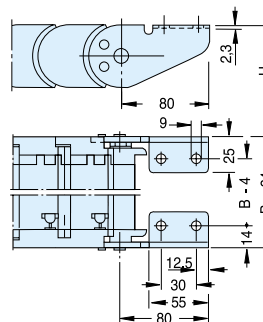
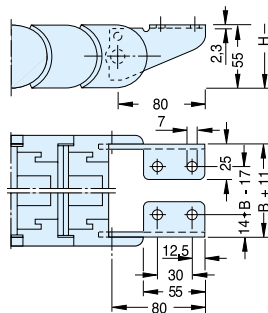
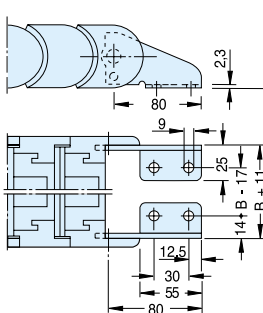
• Length $L = \frac{S}{2} + \pi R + 142$

• Radius	R	100	150	200	250
• Height	H	255	355	455	555

Cross Section A-A



Brackets



Fixed Bracket

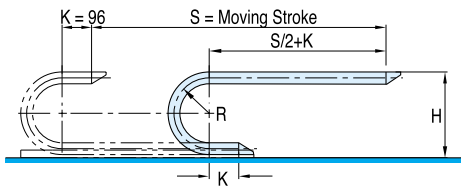
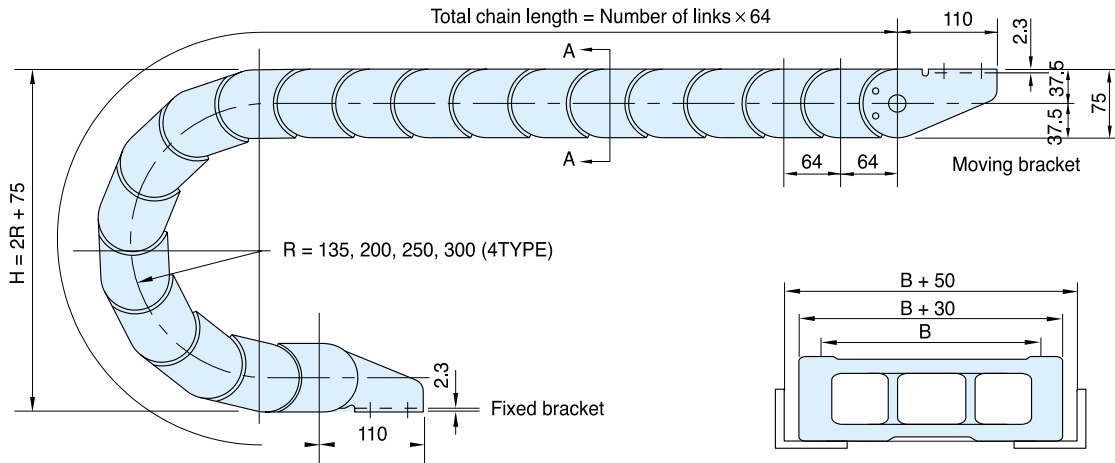
Moving Bracket

TKC 640

Order Example (주문예)

TKC640	70R	B90	1700L	3SET
Type	Radius	Width	Length	Q'ty

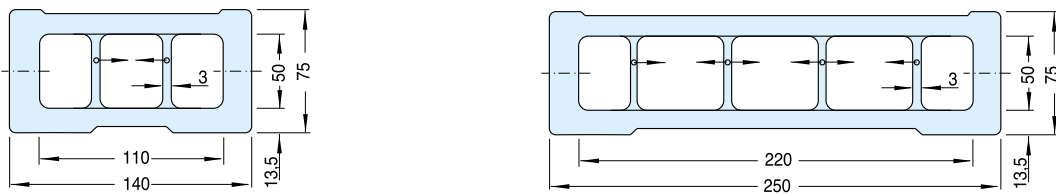
Chain, Guide Rail



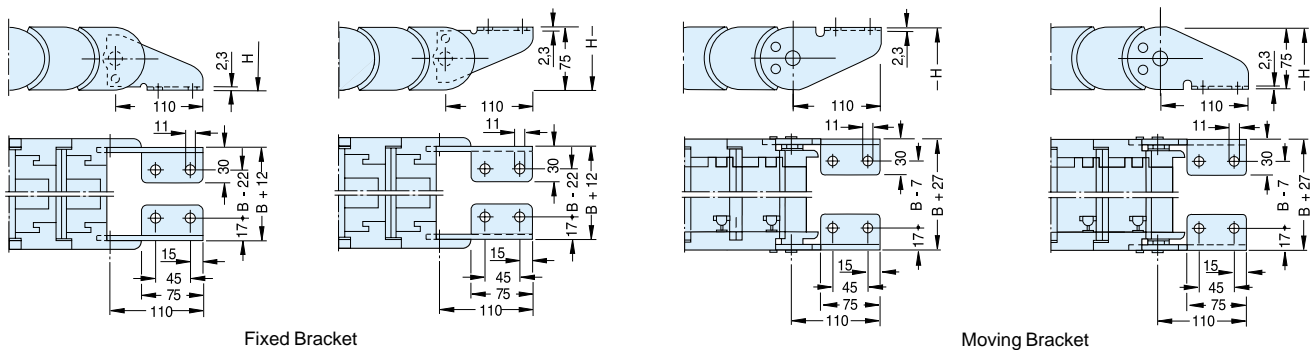
• Length $L = \frac{S}{2} + \pi R + 192$

• Radius	R	135	200	250	300
• Height	H	345	475	575	675

Cross Section A-A



Brackets



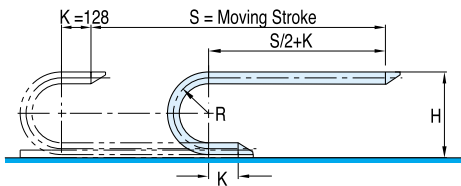
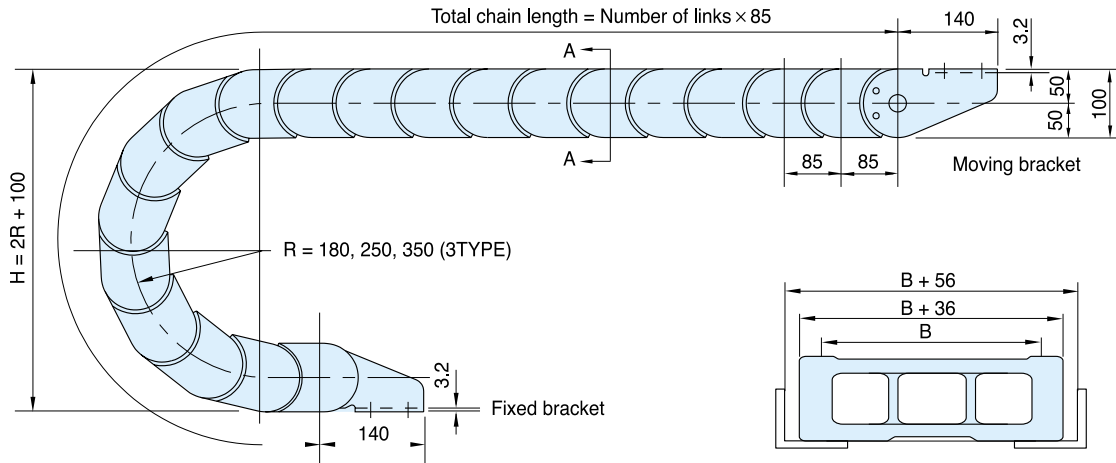


TKC 850

Order Example (주문 예)

TKC850	150R	B160	2021L	6SET
Type	Radius	Width	Length	Q'ty

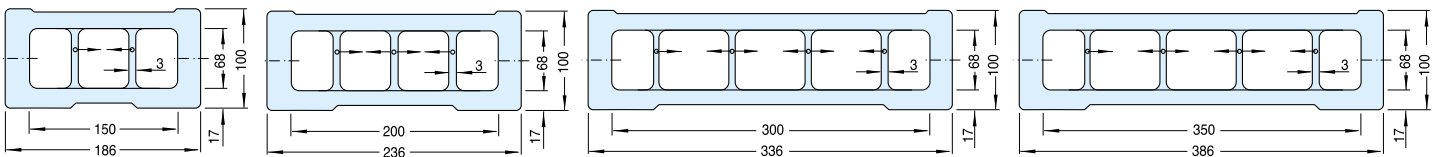
Chain, Guide Rail



• Length $L = \frac{S}{2} + \pi R + 256$

• Radius	R	180	250	350
• Height	H	460	600	800

Cross Section A-A



Brackets

